

Streamline Your PK/PD Reporting Using Phoenix Connect

Tom Jones, PhD
Senior Scientific Trainer, Certara

Thursday, 20 February 2014
We will begin at 10:30 AM EDT
(9:30 AM Chicago, 7:30 AM San Francisco)

Event Number XXX XXX XXX

Event Information:
For WebEx Technical Assistance

In the US and Canada, dial 866-229-3239

International, dial +1-408-435-7088

Submit questions by clicking on the question mark icon on the floating toolbar located on the lower right side of your screen.

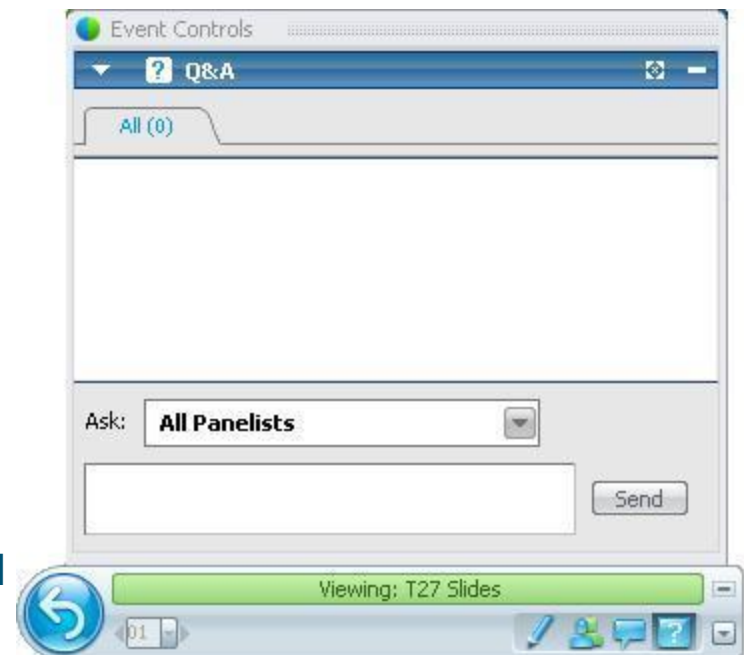
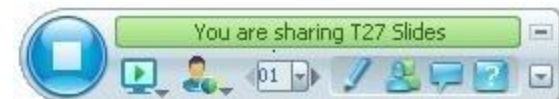
Submitting Comments & Questions

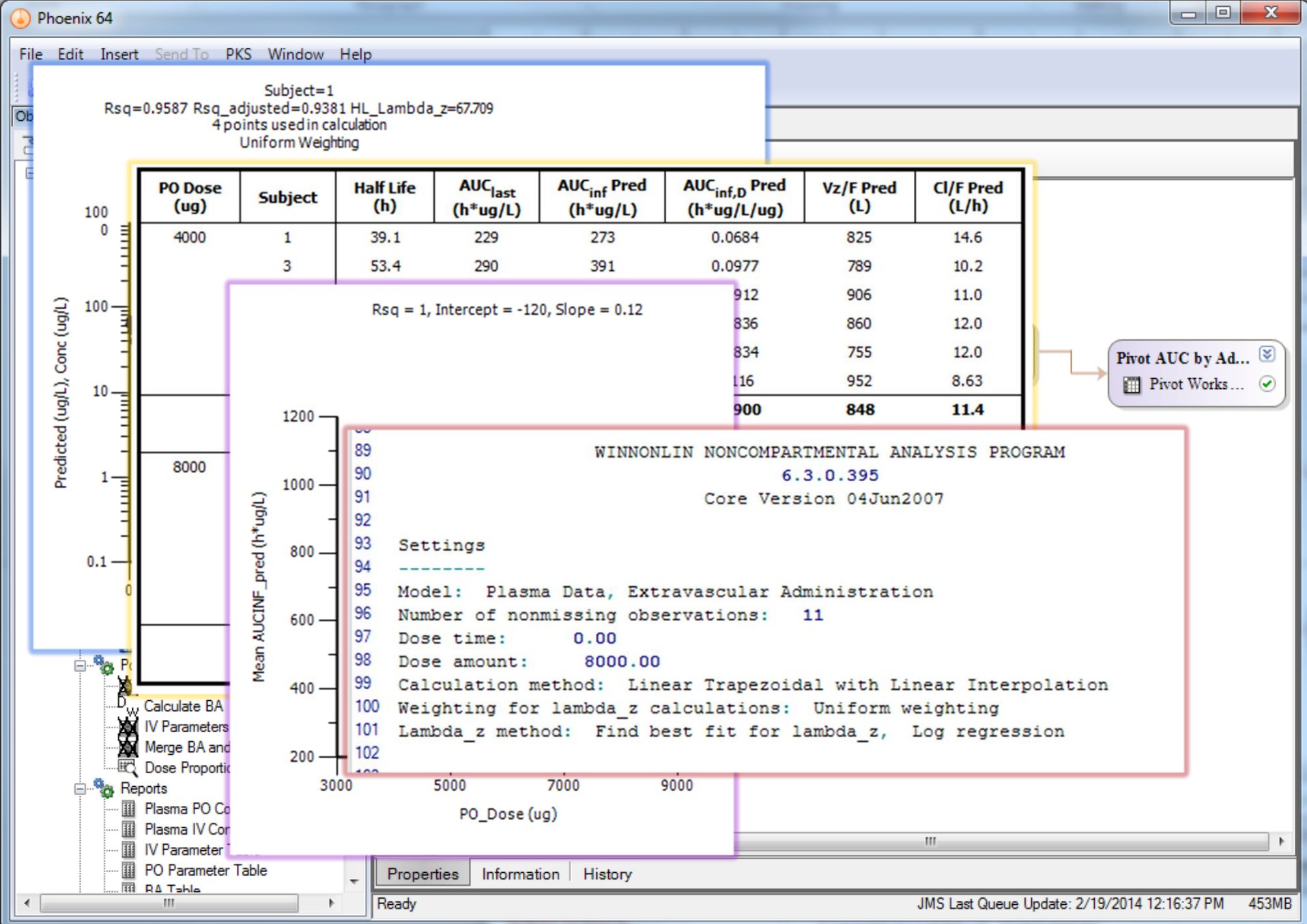
Questions may be submitted at any time during the presentation. To submit a question:

Click on the Question Mark icon (?) on the floating toolbar (as shown at the right).

This will open the Q&A window on your system only.

Type your question into the small dialog box and click the Send Button.





Transferring Tables, Listings and Figures (TLF) to Reports

Without Reporter

- Manual export
- Reformatting and editing
- Difficult to revise report
- Potential for human error
- Takes hours

With Reporter

- Automates report construction
- TLF captions are auto-numbered, context sensitive, customizable
- Easy to revise report
- Reduces potential for human error
- Takes minutes

Common Problems in Reporting

Frequent
Revisions

Finding and
Fixing
Mistakes

Audit Trail

Renumbering
Captions

Repetition

Reformatting

Takes too
Long

Phoenix 64

File Edit Insert Send To PKS Window Help

Object Browser

- BA Study 1
 - Data
 - BA Study 1
 - Dosing
 - Observations
 - Code
 - Tables
 - BQL Rules
 - Documents
 - Shortcuts
 - Workflow
 - Dosing
 - Observations
 - Pre Processing
 - Split IV and PO
 - Merge PO Dose
 - Pivot PO Conc by Sub
 - Merge IV Dose
 - Pivot IV Conc by Subje
 - NCA
 - NCA IV
 - NCA PO
 - Append IV and PO
 - Pivot AUC by Administ
 - Post Processing
 - PO Parameters
 - Calculate BA
 - IV Parameters
 - Merge BA and Dosing
 - Dose Proportionality D
 - Reports
 - Plasma PO Concentrat
 - Plasma IV Concentrati
 - IV Parameter Table
 - PO Parameter Table
 - BA Table
 - BA Box Plot
 - Observations
 - Dose Proportionality Pl

BA Study 1 >> Workflow >> Reporter

Setup Results Verification

Add Content Map Remove

<Figure> - BA Study 1.Workflow.Reports.Observations.Results.Plot

<SectionPageBreak>

<Table> - BA Study 1.Workflow.Reports.Observations.Results.Plot

<Table> - BA Study 1.Workflow.Reports.Observations.Results.Plot

<Table> - BA Study 1.Workflow.Reports.Observations.Results.Plot

<Table> - BA Study 1.Workflow.Reports.Observations.Results.Plot

<Table> - BA Study 1.Workflow.Reports.Observations.Results.Plot

<SectionPageBreak>

<Figure> - BA Study 1.Workflow.Reports.Dose Proportionality Plot.Results.Plot

<Figure> - BA Study 1.Workflow.NCA.NCA IV.Results.Observed Y and Predicted Y

<Figure> - BA Study 1.Workflow.NCA.NCA PO.Results.Observed Y and Predicted Y

PO Dose (ug)	Subject	Half Life (h)	AUC _{last} (h*ug/L)	AUC _{inf} Pred (h*ug/L)	AUC _{inf} (h*ug/L)
4000	1	39.1	229	273	
	3	53.4	290	391	
	5	57.3	264	365	
	7	49.8	250	334	
	9	43	262	333	
	11		286	464	
			263	360	
			23	64	
80			551	818	
			493	793	
			616	1110	
			512	656	
	10	79.6	604	1020	

Options Caption Footnote

Caption Text

Source - Data Worksheet / Object Source

1:BA Study 1.Workflow.Post Processing.PO Parameters.Re

Columns (Drag or Double-Click to Caption Text)

- Dose_Group
- Subject
- Rsq
- Rsq_adjusted
- Corr_XY
- No_points_lambda_z
- Lambda_z
- Lambda_z:ColUnit
- Lambda_z_lower
- Lambda_z_lower:ColUnit
- Lambda_z_upper
- Lambda_z_upper:ColUnit
- HL_Lambda_z
- HL_Lambda_z:ColUnit
- Tlag
- Tlag:ColUnit
- Tmax

Individual and Summary PK Parameters for PO Administration of #1:PO_Dose##

1:PO_Dose:ColUnit#

Properties Information History

Ready

JMS Last Queue Update: 2/19/2014 2:24:04 PM 192MB

Add Content from Phoenix Project

Content Preview

Use Column Data in Captions

Specify Caption Text

Phoenix 64

File Edit Insert Send To PKS Window Help

Object Browser

- BA Study 1
 - Data
 - BA Study 1
 - Dosing
 - Observations
 - Code
 - Tables
 - BQL Rules
 - Documents
 - Shortcuts
 - Workflow
 - Dosing
 - Observations
 - Pre Processing
 - Split IV and PO
 - Merge PO Dose
 - Pivot PO Conc by Sub
 - Merge IV Dose
 - Pivot IV Conc by Subje
 - NCA
 - NCA IV
 - NCA PO
 - Append IV and PO
 - Pivot AUC by Administ
 - Post Processing
 - PO Parameters
 - Calculate BA
 - IV Parameters
 - Merge BA and Dosing
 - Dose Proportionality D
 - Reports
 - Plasma PO Concent
 - Plasma IV Concent
 - IV Parameter Table
 - PO Parameter Table
 - BA Table
 - BA Box Plot
 - Observ
 - Dose Proportionality Pl
 - Reporter

BA Study 1 >> Workflow >> Reporter

Setup Results Verification

Filter:

Results

- Report.docx
- Text Output
- Setting

Report can not be displayed. However it can be saved to disk or may be viewed externally. Right click on object and select 'Export' to export. Press 'View in External Viewer' to view. Note that external viewers can be limited in displaying this object.

View in External Viewer

Options Cap

Caption Text

Individual and Summary PK Parameters for PO Administration of #1:PO_Dose# #
1:PO_Dose:ColUnit#

Columns (Drag or Double-Click to Caption Text)

- Dose_Group
- Subject
- Rsq
- Rsq_adjusted
- Corr_XY
- No_points_lambda_z
- Lambda_z
- Lambda_z:ColUnit
- Lambda_z_lower
- Lambda_z_lower:ColUnit
- Lambda_z_upper
- Lambda_z_upper:ColUnit
- HL_Lambda_z
- HL_Lambda_z:ColUnit
- Tlag
- Tlag:ColUnit
- Tmax

Properties Information History

Ready

JMS Last Queue Update: 2/19/2014 2:24:04 PM 193MB

Finished Report is Stored in Project

Launch Microsoft Word to View Report

Report is Part of Workflow

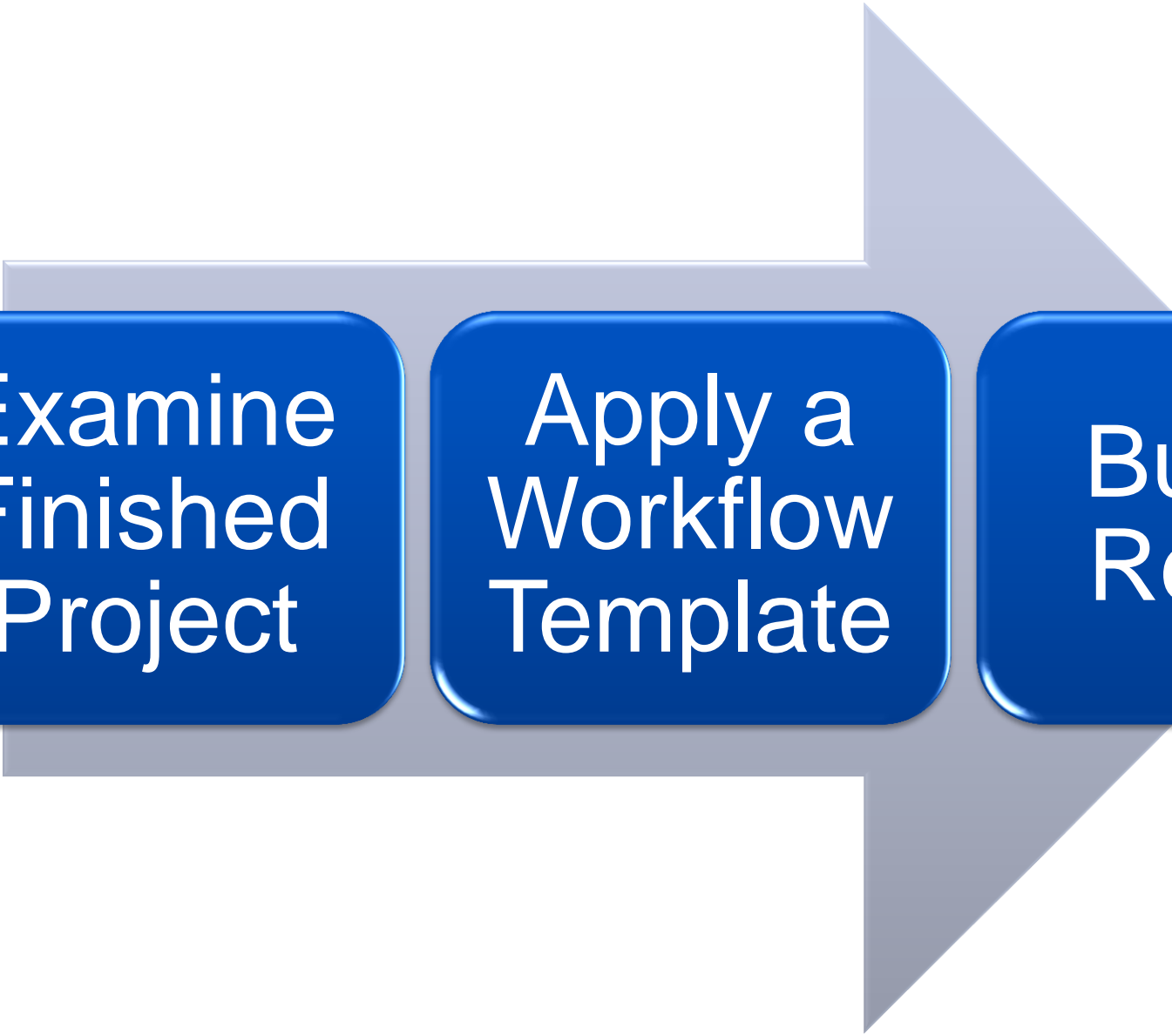
Table 6: Individual and Summary PK Parameters for PO Administration of 4000, 8000 ug

PO Dose (ug)	Subject	Half Life (h)	AUC _{last} (h*ug/L)	AUC _{inf} Pred (h*ug/L)	AUC _{inf} Pred (h*ug/L)	Vz/F Pred (L)	Cl/F Pred (L/h)
4000	1	39.1	229	273	0.0684	825	14.6
	3	53.4	290	391	0.0977	789	10.2
	5	57.3	264	365	0.0912	825	11.0
	7	49.8	250	334	0.0836	825	11.0
	9	43.6	262	333	0.0834	825	11.0
	11	76.5	286	464	0.116	825	11.0
Mean		53.3	263	360	0.0900		
SD		13	23	64	0.016		
8000	2	70.3	551	818	0.102	1150	10.1
	4	79.2	493	793	0.0992	1150	10.1
	6	91.2	616	1110	0.139	949	7.21
	8	40.6	512	656	0.0820	714	12.2
	10	79.6	604	1020	0.127	902	7.86
	12	35.2	524	646	0.0808	629	12.4
Mean		66.0	550	840	0.105	890	9.92
SD		23	50	190	0.024	190	2.1

Captions Auto-Numbered

Captions Can Include Column Data

Tables Automatically Split Across Pages (if too large)



Examine
Finished
Project

Apply a
Workflow
Template

Build a
Report

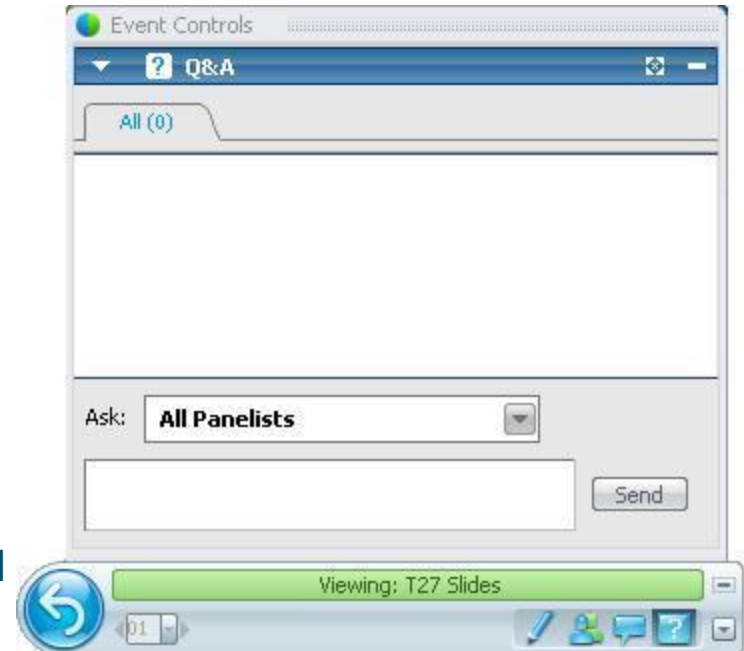
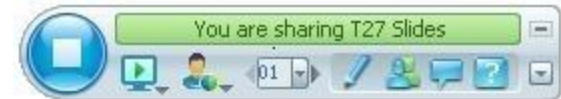
Submitting Comments & Questions

Questions may be submitted at any time during the presentation. To submit a question:

Click on the Question Mark icon (?) on the floating toolbar (as shown at the right).

This will open the Q&A window on your system only.

Type your question into the small dialog box and click the Send Button.



Contacts & Follow-Up: Thank you!

Americas

Telephone (US): 888-708-7444
Telephone (Intl): +1-919-852-4636
Email: suzanne.minton@certara.com

Europe

Telephone: +49(89)45103036
Email: sales@certara.com

India

Telephone: +91 984 500 6625
Email: anand.gupta@certara.com

Japan

Telephone: +81 (0)50-3786-9898
Email: tomoo.shinya@certara.com